

Calendar of Events

ROADSIDE MARKERS

Heritage Preservation Month, May 2013

www.nmhistoricpreservation.org



EVENTS

Heritage Preservation Month is a national event celebrated in New Mexico each May with a theme tailored to the state. Parks, museums, cities and towns, individuals and organizations hold events to honor our state's heritage. They range from architectural tours, hikes to archaeological sites—many of them restricted to the public except in May—lectures and demonstrations, festivals and workshops. They all are published in the Historic Preservation Division's *Calendar of Events*, and many have become May traditions.

This year, New Mexico celebrates the Official Scenic Historic Markers that began appearing along New Mexico roadsides in 1935. They commemorate people, places and events that shaped New Mexico. Included are the notorious and honorable, geologic marvels, sites and buildings. Today there are an estimated 680 historic markers along highways, in towns and in parks. This year we especially celebrate the New Mexico Historic Women Marker Initiative, which added 65 markers completely devoted to women's contributions to our state. Until 2007, only one marker mentioned a woman by name. The 2013 Preservation Month poster



At left, Esther Martinez. The Three Fates marker near Taos on N.M. 522 commemorates Mabel Dodge Lujan, Frieda Lawrence and Dorothy Brett.

commemorates acclaimed linguist and storyteller Esther Martinez who was named a Heritage Fellow by the National Endowment for the Arts for preserving the Tewa language. Her historic marker is located near Ohkay Owingeh Pueblo on N.M. 68 at mile marker 4. Many marker locations can be found on HPD’s website, by searching the Internet and through Smartphone applications.

HPD partners with numerous government, education and private organizations and individuals to bring you the *Calendar of Events*. In all, there are 36 events statewide—some lasting for several days—that are worth a road trip and time spent exploring New Mexico. When planning for a Preservation Month event, prepare for the elements. Hikes and outdoor tours can mean long hours in the sun; rain and strong winds also are possibilities. Bring sunscreen, good walking shoes, water and be sure to contact the event sponsor with any questions. But most of all have fun and learn something new about New Mexico’s heritage.

The **2013 HERITAGE PRESERVATION MONTH POSTER** is available beginning in mid-April by contacting HPD at 505-827-6320.

We would also like to ask you to take the opportunity to stop and read as many historic markers on your journeys to Preservation Month events as possible. Also during May, the National New Deal Preservation Association based in Santa Fe is highlighting New Deal-era murals in New Mexico post offices. As an ongoing opportunity during Preservation Month to see well preserved murals, post offices in Truth or Consequences, Deming, Portales and Raton are open during regular hours and have well-preserved murals on display. Former post offices in Alamogordo (now a county office at 1101 New York Ave.) and Clovis (an architects office at 122 W. Fourth St., also have New Deal murals. The Federal Courthouse in Santa Fe has a second floor mural that originally was painted for a former post office in Gallup.



T or C Post Office mural

All Events

Tinkertown Museum

Sandia Park

9 A.M. – 6 P.M. **Daily**

\$3.50 admission



Tinkertown Museum is a roadside attraction reminiscent of what motorists might have found in the early days of the historic markers. It contains a handmade animated miniature western town and a three ring circus surrounded by a compound of 50,000 glass bottles. Stop by for a visit and a walk back in time. The museum offers a discount (two for the price of one) to **Heritage Preservation Month participants** who identify themselves as such. It was named one of the top ten small museums in America by the Huffington Post and Fox News. 121 Sandia Crest Road on N.M. 536.

Mexican Canyon Trestle Overlook

Cloudcroft

Daily during daylight hours

The trestle is the last remaining structure of the famous Cloud-climbing Railroad. Established as a logging railroad in 1898, it transported passengers to the Village of Cloudcroft from 1900–1930 who traveled from El Paso to escape the hot summer months. A scenic overlook recently was completed with the restoration of the trestle. A drawing will be held at the end of the month from forms collected during May for posters of the trestle. U.S. Forest Service/Lincoln National Forrest: mgutzman@fs.fed.us. East on U.S. 82 toward Cloudcroft for 16.1 miles to the trestle turnout and overlook.



May 3-5

Archaeological Society of New Mexico Annual Meeting

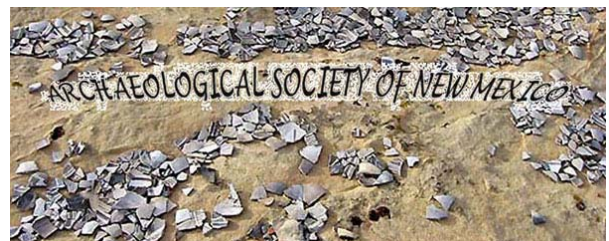
“Life Along The Rio Grande”

Indian Pueblo Cultural Center—Albuquerque

Registration Required—Various rates apply

The Saturday morning program features a seminar on Chamisal Pueblo. Other sessions include Dr. Matt Schamder’s talk on the archaeology of the Valley, an awards banquet and Friday night Indian taco buffet.

http://www.newmexico-archaeology.org/text/annual_meeting2013.htm to register; info@abqarchaeology.org with any questions.



May 4

Old Fort Marcy Exhibit Unveiling and Walking Tour
Old Fort Marcy/Hillside Park/Prince Park
Santa Fe
10:00 A.M.

Fort Marcy was constructed atop a hill above Santa Fe in 1846 as a symbol of American military control. Join the City of Santa Fe, Santa Fe Trail Association and the National Park Service for a short walking tour of the archaeological site and an exhibit unveiling. Kids can earn a Junior Ranger badge for the Santa Fe National Historic Trail. The park is at the intersection of Kearney and Prince Avenues. Carol S. Clark, NPS, carol_s_clark@nps.gov, 505-988-6842, www.nps.gov/safe; John W. Murphey, City of Santa Fe, johnwmurphey@santafenm.gov, 505-955-6660, www.santafenm.gov/index.aspx?NID=2038



Fort Marcy in the background of this 1846 illustration of La Parroquia, which preceded St. Francis Cathedral.

May 4

Salmon Ruins Annual Pueblito Tour
Bloomfield
9 A.M. — 4:30 P.M.
Registration Required—Free



Salmon Ruins Executive Director Larry Baker guides a tour of rock art and Navajo defensive sites dating to the 1500s. You will experience incredible sites and learn about efforts to preserve this important part of our cultural heritage. Meet at the Salmon Ruins Museum with a full tank of gas, plenty of water, lunch and a camera to caravan to Dinetah! The museum is at 6134 U.S. 64 two miles west of Bloomfield. sreducation@sisna.com/ror-632-2013 to register.

May 4

“The Clovis Site” Demonstrations
Prehistoric New Mexico Open House
Blackwater Draw—Portales
9 A.M.—4 P.M.

Learn to toss an atlatl, cook prehistoric style, flintknapping, work fiber and make sandals during free demonstrations at the site that dated human occupancy in North America to more than 10,000 years ago. Meet with archaeologists from the Museum of New Mexico and Blackwater Draw National Monument.

Located approximately six miles north of Portales, one-mile north of Oasis State Park Rd. on N.M. 467. Sponsored by Eastern New Mexico University, 575-562-1011.



May 4

Fort Bayard Rifle Demonstration & Tour
Fort Bayard National Historic Landmark
10:30 A.M.

Ken Smith appears in a Company A uniform from the 13th Infantry to demonstrate 1890's style military target practice using an 1885 manual for rifle and carbine firing. No arms will be fired during the event. A walking tour follows, and the museum opens at 9:30 A.M. The fort is six miles east of Silver City off N.M. 90. 575-388-4477 or 575-388-9123 for more information.

May 4 & 5

Mimbres Pottery Reproduction Workshop
Petroglyph National Monument—Albuquerque
10 A.M. – 3 P.M. (both days)
Registration Required—\$40 fee



The two-day workshop is facilitated by renowned potter Michael Kanteena. Participants will create original pieces with traditional methods, which will later be fired by Mr. Kanteena. The workshop is at the visitor center located at the intersection of Unser Blvd., NW and Western Trail NW on the west side of town. Luke Fields, NPS Resource Interpreter: 505-899-0205 x.338 to register, space is limited; luke_fields@nps.gov.

May 5

Under the Mexican Eagle: Camino Real and its Legacy
Lecture
Petroglyphs National Monument—Albuquerque
3 P.M.

El Camino Real de Tierra Adentro brought new language, architecture, religion, agricultural practices, textiles and Spanish culture to what now is New Mexico for the first time. In time villages, provinces, pueblos and the capitals of Mexico City and Santa Fe were linked by a single road. Dr. Joseph Sánchez will emphasize the Royal Road's heritage is shared by Mexico and the United States as a common history. At the visitor center located at the intersection of Unser Blvd, NW and Western Trail, NW, on the west side of town. Luke Fields, NPS, 505-899-0205 x 338. luke_fields@nps.gov.

May 5

East Ruin Tour
Aztec National Monument—Aztec
3 P.M.—4 P.M.

Tour a large, unexcavated great house to develop a better understanding of Ancestral Pueblo society along the Animas River. This undeveloped site is closed to the public except on guided tours. Participants must have good balance to traverse one mile of uneven terrain. Wear sturdy closed-toed shoes and bring water and sun protection. 84 County Road 2900. From N.M. 516 in Aztec, turn north on C.R. 2900 (Ruins Road), straight at stop sign and directly into visitor center parking lot. Lauren Blacik, azru_information@nps.gov; 505-334-6174.

May 11

Dry Cimarron Driving Tour

Folsom

8 a.m.

Registration Required



A walking tour of Folsom telling the history of the railroad and the start of the town. The trip down the Dry Cimarron includes various stops with discussions about local geology, early Indians, settlement of the Dry Cimarron River Valley and a final stop at Kenton, Okla., where you learn about local outlaws. Venita Brown shares an amazing amount of information about the history of the area. Tour begins at the Folsom Museum. Folsom is located 37 miles east of Raton. NM 64/87 to the intersection of NM 325 and 456. www.folsommuseum.org, 575-278-2122.

May 11

Archaeology at Fort Bayard

Fort Bayard NHL

10:30 A.M.

Bill Lockart brings archaeologists from Tularosa and Alamogordo for an archaeological study at Fort Bayard. The museum opens at 9:30 A.M. Meet on the porch for the study. Walking tours are available after the presentation. Fort Bayard is six miles south of Silver City on N.M. 90.

May 11

Heritage Preservation Day

Oliver Lee Memorial State Park—Tours & Presentations

Alamogordo

9 A.M.—4 P.M.

Park day-use entry and camping fees apply

The natural resources of Dog Canyon have enabled human occupation for 10,000 years. Come discover the natural, cultural and historical resources of Oliver Lee Memorial State Park at this annual park event. The schedule of programs will be announced. Follow U.S. 54 eight miles south of town, and four miles east on Dog Canyon Rd. Park Ranger Charles Wood, 575-437-8284, charles.wood@state.nm.us, www.nmparks.com.



May 11

Hispanic River Community Lecture Series
Special Collections Library—Botts Hall
Albuquerque
10:30 A.M.—Noon

One of 13 talks about Albuquerque area Rio Grande communities, the Heritage Preservation Month event features Los Candelarias y Los Griegos. JoAnn Ulibarri gives inside knowledge about the community's geography, land grants, genealogy and culture. The library's Botts Hall is at 423 Central Ave., NE. 505-848-1376; www.library.cabq.gov/specialcollections.

May 11

Hot Springs Pueblo Tour
Jemez Springs
10 A.M.

Hike to the top of Battleship Rock in the beautiful Jemez Mountains to see a 75-room pueblo excavated in 1939 by Paul Reiter, of UNM. The four-mile roundtrip hike is considered moderately challenging. Meet ranger Connie Constan at the Jemez Ranger Station, 051 Woodsy Lane. Take N.M. 4 to town, then carpool four miles to

Battleship Rock. connieconstan@fs.fed.us, 575-829-3535.



By Connie Constan

May 11

Archaeology Tour of Burnt Mesa
Bandelier National Monument—Los Alamos
10 A.M.—12:30 P.M.

The park archaeologist leads a four-mile hike to several 800-year-old Ancestral Puebloan sites and farming areas, plus a visit to multiple eagle traps on the rim of Frijoles Canyon. Bring water, hat and good hiking shoes. Meet at Burn Mesa parking lot, N.M. State Road 4, four miles west of the monument entrance. Rory Gauthier: 505-672-3861 x 702/rory_gauthier@nps.gov.

May 12

Mother's Day Historic Architectural Tour
Santa Fe
1 P.M.—4 P.M.
Ticket Required

The Historic Santa Fe Foundation hosts its annual May tour in observance of Heritage Preservation Month. Focusing on the Plaza area, open to the public are the Tudesqui House, 135 E. De Vargas; the foyer of the old library at 120 W. Washington Ave. where Oliver Rush's New Deal frescos can be viewed; Felipe B. Delgado House, 124 W. Palace Ave; Oliver P. Hovey House, 136 E. Grant Ave. Start at any location to purchase a \$5 ticket and pick up a map. Elaine Bergman, 505-983-2567; info@historicsantafe.org.



Tudesqui House, courtesy Charles Mann

May 12

Mother's Day Volcano Hike Petroglyph National Forest

10 A.M.



Park geologist Jack Babcock leads this annual Mother's Day tradition, a "Mother Earth appreciation hike" around the Albuquerque Volcanoes. Meet at the Volcanoes Day Use Area trailhead for this 1.5 mile trek through spectacular scenery. The Volcanoes Day Use Area is 4.8 miles north of I-40 on Atrisco Vista Blvd. (Exit #149). For directions: Luke Fields, NPS , 505-899-0205 x.335; luke_fields@nps.gov.

May 18

Folsom Archaeological Site Tour

Folsom

8 A.M. & 1 P.M.

Registration Required

Folsom Museum sponsors two guided tours to the historical Folsom Archaeological Site, first excavated in 1926-27. This site established the antiquity of human occupation in North America through the excavation of an ancient bison kill site discovered in 1908. It is administered by the state Commissioner of Public Lands. Folsom is 37 miles east of Raton. NM 64/87 to the intersection of NM 325 and 456. Folsom Museum: www.folsommuseum.org, 575-278-2122.



A Folsom point

May 18

North Mesa Tour

Aztec Ruins National Monument

10 a.m.—Noon



Visit some early sites within the monument, including an unexcavated Great House thought to pre-date the West and East Ruins. This undeveloped site is closed to the public except on guided tour. Participants must have good balance and be able to traverse one mile of uneven terrain. Wear sturdy closed-toed shoes, bring water and sun protection. 84 County Road 2900. From N.M. 516 in Aztec, turn north on C.R. 2900 (Ruins Road), straight at stop sign and directly into visitor center parking lot. Lauren Blacik, azru_information@nps.gov; 505-334-6174.

May 18

Pancho Villa State Park and Columbus Tour
Columbus
11 A.M.

Take a brief ranger guided walking tour of the historic sites of Pancho Villa State Park and the Village of Columbus where Pancho Villa's forces raided and were repelled by the U.S. Army Camp at Columbus. Be sure to stop and read our recently refurbished historic markers. Tour begins at the park's exhibit hall at the intersection of N.M. 9 and 11. John Read, Heritage educator, 575-531-2711, john.read@state.nm.us.



May 18

Corrales Heritage Day
Old San Ysidro Church
10 A.M.—4 P.M.

Recognized authority on Southwestern cooking and Corrales resident Jan Butel demonstrates recipes and gives a talk beginning at 11 A.M. At 2 P.M., local archaeologist Mike Marshall explains how sites are dated by examining pot sherds. Corrales Historical Society members lead tours of the San Ysidro Cemetery. Children's activities are available, and maps, archival photographs on display. The church and cemetery date to the 1700s, although a massive flood in 1868 swept away the original structure and coffins which were reburied on higher ground where the 1800s adobe church is located. The church is at 966 Old Church Rd. From Alameda and Coors Rd. continue north on Corrales Rd. Turn left. Mary Davis, 505-898-5017.

May 18

Chatauqua at Fort Bayard
Fort Bayard NHL
10:30 A.M.

Visit with Col. Dr. Bushnell, who from 1903-1907 was commander of Fort Bayard U.S. Army Hospital. Col Bushnell will be in front of the Commanding Officer's Quarters, No. 26, courtesy of Dr. John Bell whose re-enactment skills will entertain as well as inform. Fort Bayard is six miles south of Silver City on N.M. 90. Cecilia Bell: 575-388-4477.



Commanding Officers Headquarters

May 18

Heritage Day @ Casa San Ysidro

All day

Free

Explore New Mexico's agricultural and cultural traditions at Casa San Ysidro in Corrales. Enjoy performances, weaving, blacksmith and horno baking demonstrations and explore the museum's period rooms to see how New Mexican families lived long ago. Artists demonstrate their craft at the Traditional Art Mercado. Casa San Ysidro is located at 973 Old Church Road in Corrales. From Alameda and Coors Rd. continue north on Corrales Rd. Turn left at Old Church Rd. just past Wagner's Family Farm. Carol Lopez, Manager, 505-897-8828; cklopez@cabq.gov



May 18

El Camino Real del Tierra Adentro and the Rise Up La Bajada Santa Fe National Forest Headquarters

Santa Fe

9:00 am



Camino Real on La Bajada by
Worman and Gerow 2011:60

The Camino Real crossed from Rio Medio into Rio Arriba at La Bajada. Sections of the historic trail are in the Santa Fe National Forest and interpreted on Official Scenic Historic Markers up and down the state. A close look at these Camino segments gives visitors an understanding of how the Royal Road's routes changed through time. Headquarters are at 11 Forest Ln. on the southwest corner of the intersection of N.M. 14 and N.M. 599 just off I-25. Turn east and at the intersection, then north and to the first road to the west which is Forest Lane. Look for a large green metal roofed building and meet at the parking lot on the northern side. Mike Bremer, 505-438-5380, mbremer@fs.fed.us.

May 19

Wheels of the Past:

Historic Routes Between Rio Grande and Rio Puerco Communities

Lecture by archaeologist Ron Fields

Petroglyph National Monument—Albuquerque

3 P.M.

While the monument does not have an Official Scenic Historic Marker, its cultural resources warrant a nomination. Mr. Fields discusses one such feature in this lecture; his discovery of historical wagon roads crossing the monument that linked Rio Grande and Rio Puerco communities. At the visitor center located at the intersection of Unser Blvd, NW and Western Trail, NW, on the Westside. 505-899-0205 x 338. Luke_fields@nps.gov.



May 18

New Mexico Architectural Foundation Meeting and Tour
Albuquerque
10 A.M.

Tour the renovated city landmark Special Collections Library designed in 1925 by Arthur Rossiter, and enhanced by a Gustave Baumann mural. Attend the meeting and then walk six blocks to see the historic marker for Mary Jane Colter and the Harvey Girls. Also see the recently listed AT&SF Railway Freight Office and two other historic buildings remaining from the demolished depot complex. The library is at 423 Central Ave., NE. Cara McCulloch: 505-262-0557, newmexicoarchitecturalfoundation.org.



May 23

New Deal Fireside Chat
National Park Service Building
Santa Fe
5:30 p.m.

Author Lucinda Sachs gives insight into the life and political career of former Governor and New Deal advocate Clyde Tingley. Tingley's close relationship with FDR transformed many New Mexico communities during the Great Depression. The event is sponsored by the Heritage Preservation Award-winning state chapter of the National New Deal Preservation Association at the historic NPS headquarters built by the CCC. 1100 Old Santa Fe Trail. Kathy Flynn: newdeal@cybermesa.com



Lucinda Sachs at a recent book signing.

May 24

"Through the Heart of New Mexico on Route 66"
Lecture by David Kammer, historian
Aztec Ruins National Monument—Aztec
7 P.M.

Mr. Kammer has spent years traveling and researching the iconic American road. He has prepared nominations for several sites to the National Register of Historic Places and appeared in the PBS special *Route 66*. His talk and slide show will focus on the growth of the federal highway system and Route 66, especially in New Mexico. Aztec Ruins. Lauren Blacik, NPS, 505-334-6174; azru_information@nps.gov. 84 County Road 2900, Aztec ; from N.M. 516 in town, turn north on Ruins Rd. Go straight at stop sign directly into Visitor Center parking lot.

May 25

Fort Bayard Walking Tour
Fort Bayard NHL
9:30 A.M.—Noon

The Fort Bayard Historic Preservation Society sponsors a walking tour of the historic grounds of this NHL. A museum tour is included. Cecilia Bell, 575-388-4477.



Corporal Clinton Greaves, a Buffalo Solider at Fort Bayard in 1877, is honored with a statue at the fort. The Preservation Society often presents Chautauqs for the community about the fort's culture.

May 29

**Santa Fe Trail Dedication
Philmount Scout Ranch
Cimarron
1 P.M.
Contact NPS if attending**

A 4-mile hiking trail that follows a section of the Santa Fe National Historic Trail will be dedicated at the ranch, which is hosting the event. Short talks by Philmunt and National Park Service representatives are followed by a chance to hike the trail into the old town of Cimarron.

Kristen Van Fleet, National Trails Intermountain Region, 505-988-3563, Kristin_van_fleet@nps.gov. I-25 north to exit 419 (N.M. 58/Cimarron). Turn west, continue 19 miles and turn left onto U.S. 64/10th St. through town, four miles to the ranch.



June 1

**Hike the Santa Fe Trail
Fort Union—Watrous
10 A.M.—3:30 P.M.
Reservation Required**



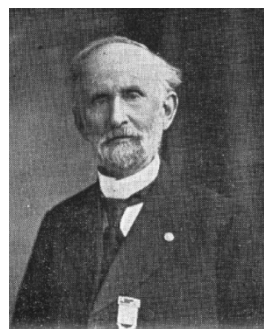
A rare opportunity for a guided hike along the Santa Fe Trail in eastern New Mexico. Imagine the sounds of hooves and wagons thundering along the trail while discovering wagon ruts hundreds of years old. Park rangers and archaeologists lead the two-mile, moderate hike. Bring closed-toe hiking shoes, hat, water, sunscreen and a sack lunch. Call 505-425-8025 x 0 for reservations. Meet at Fort Union National Monument. From Albuquerque, take I-25 north to exit 366 at Watrous, then eight miles on N.M. 161 to the visitor center.

June 2

**Victorian Memorial Day Gravesite Remembrance
Fairview Cemetery
Albuquerque
12:30 P.M.**

Reservation and fee

Participate in a traditional gravesite event honoring Dr. Thomas Harwood, a Methodist circuit rider who came to New Mexico after the Civil War with his wife Emily. Dr. Harwood is buried at Fairview, which is undergoing a restoration by the Harwood Project of the First United Methodist Church. A graveside picnic lunch, hymns, impersonator speeches and a cemetery tour. Meet at the church, 314 Lead. Take Lead St. I-25 exit to intersection of Fourth & Lead, SW. Kris Linton, 505-243-4840 or Carol Kaemper, 505-259-2919; tlinton51@aol.com.



Thomas and Emily Harwood